

How to Work with SPS Microsoft and Googledrive & Google Classroom Interchangeably 😊

Tutorial by Lynn Murray, TOR's Library Media Specialist
October 2018 3

How to Work with
SPS Microsoft and Googledrive &
Google Classroom Interchangeably

Part One: How to Upload Microsoft
files onto SPS Googledrive

Part Two: How to Download SPS
Googledrive files onto Microsoft

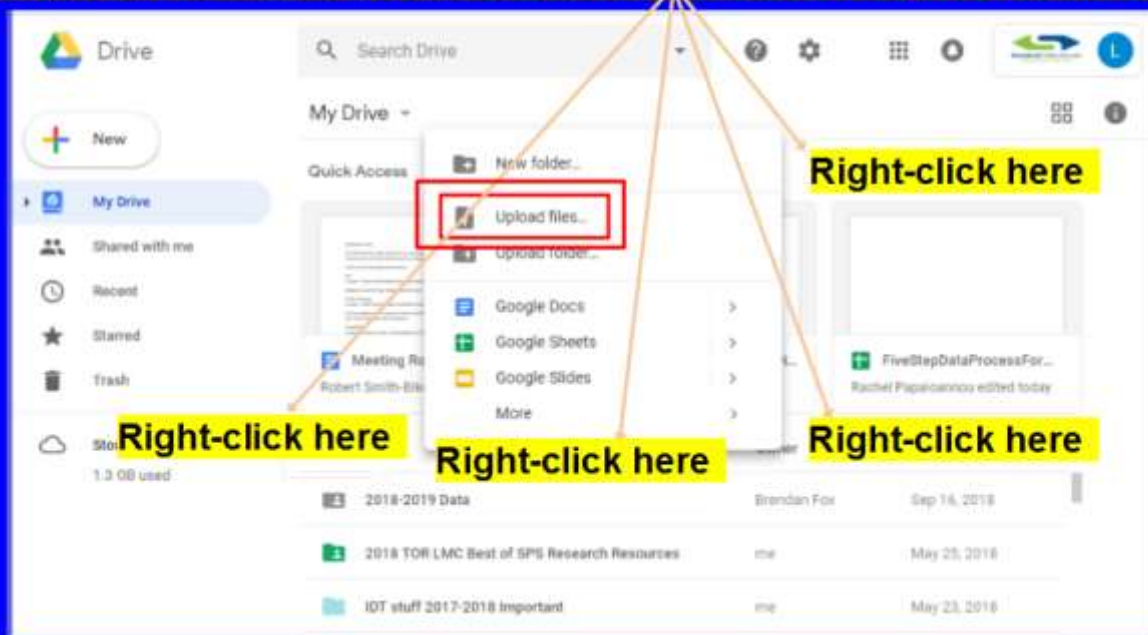
Part Three: How to Upload SPS
Googledrive/Word files onto Google Classroom

Tutorial by Lynn Murray
TOR's Library Media Specialist

How to Upload Microsoft Files to SPS Googledrive

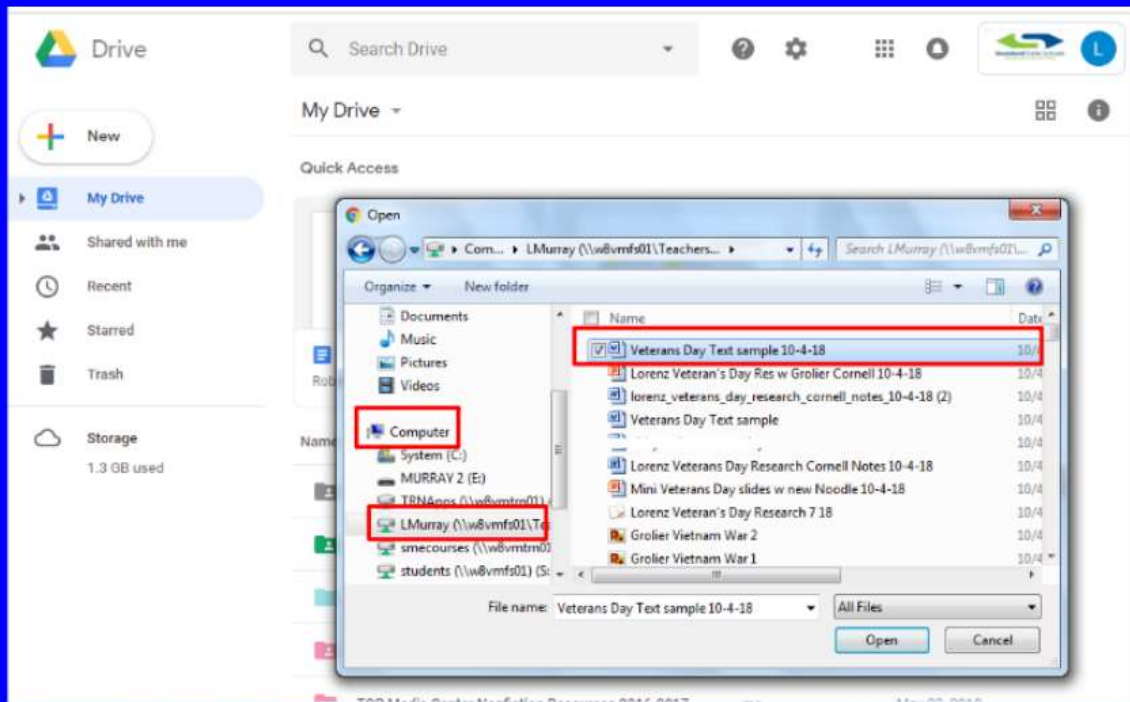
1. SPS googledrive>sign in
2. Sign in: 1567432@stamfordpublicschools.org
3. +New>Upload files...

OR RIGHT-CLICK on a **blank white area**>Upload files...



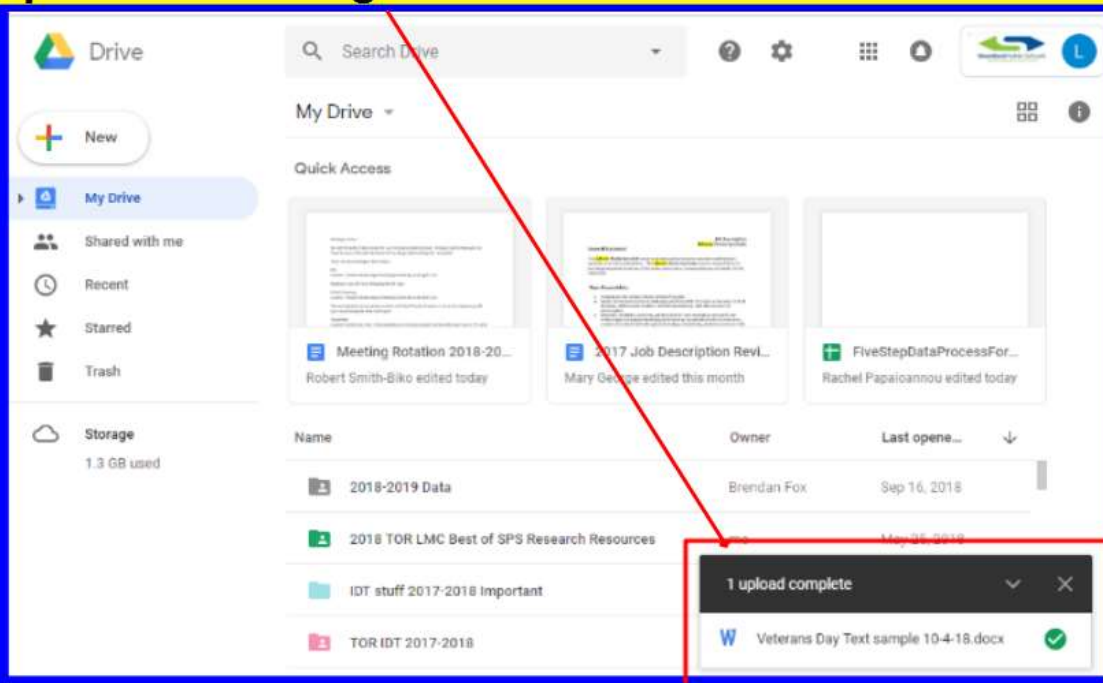
How to Upload Microsoft Files to SPS Googledrive

4. Computer>Number>Click on the assignment



How to Upload Microsoft Files to SPS Googledrive

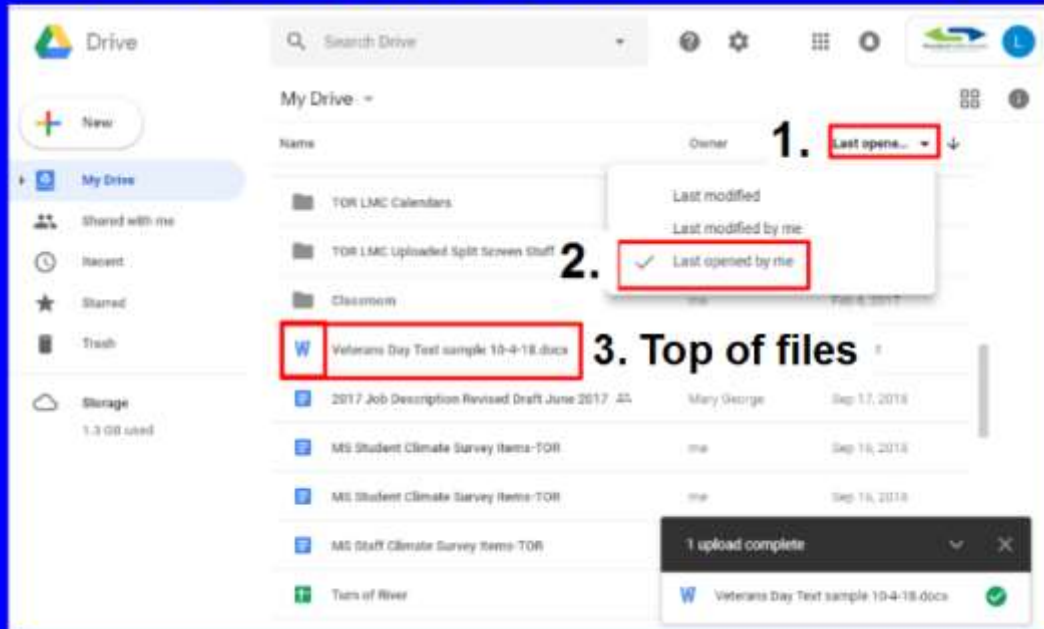
5. You'll be alerted about your Microsoft work being uploaded to Google.



How to Upload Microsoft Files to SPS Googledrive

6. To locate your uploaded file quickly:

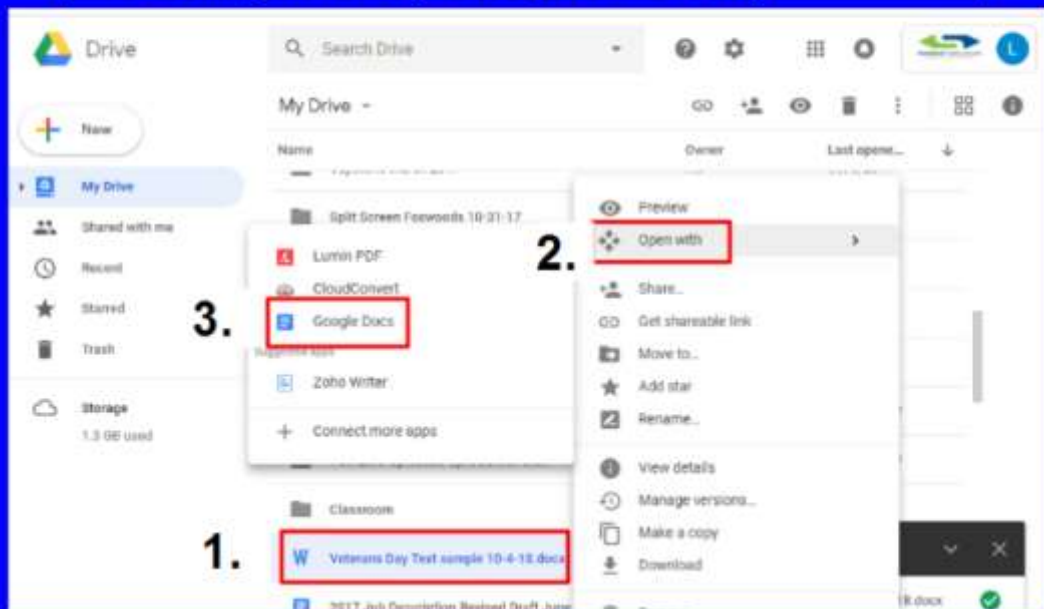
1. Last opened
2. Last opened by me



How to Upload Microsoft Files to SPS Googledrive

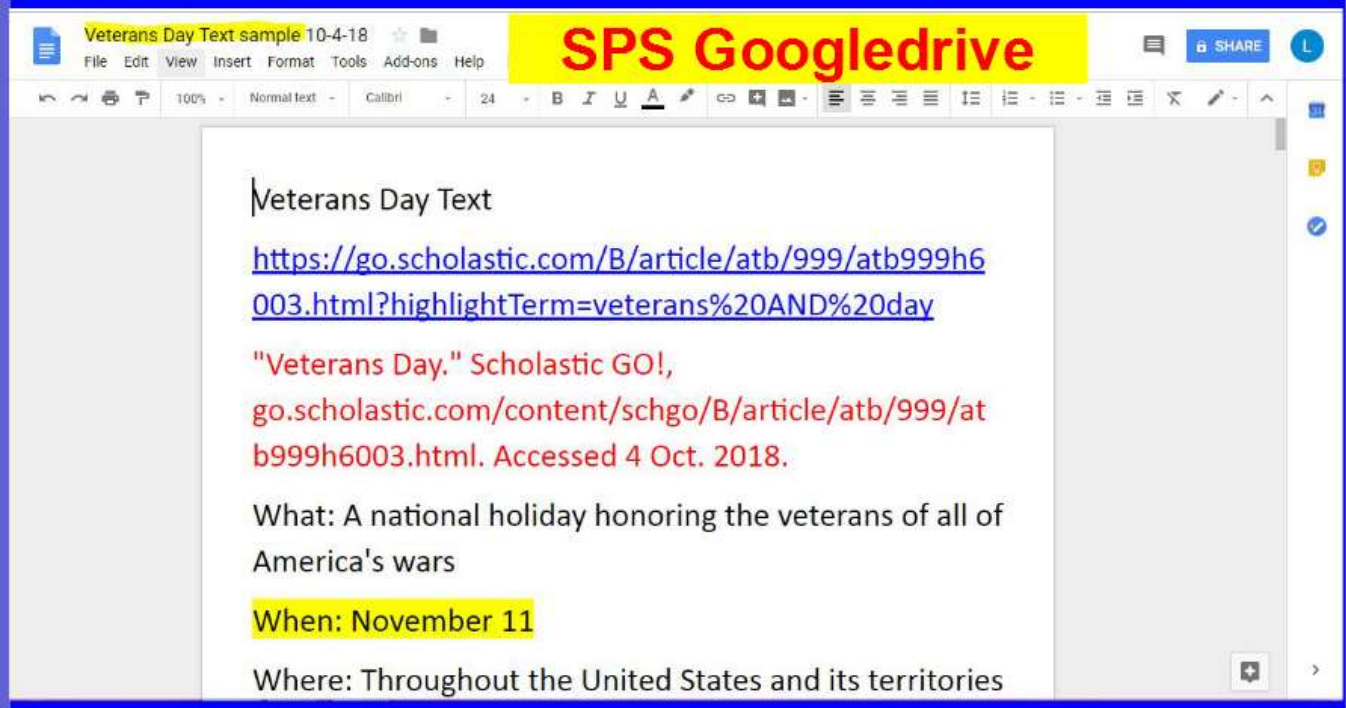
7. To open your Microsoft file on SPS Googledrive:

1. RIGHT-CLICK on your Microsoft file.
2. Open with
3. Google Docs (Slides, Sheets etc.)



How to Upload Microsoft Files to SPS Googledrive

8. View of a Microsoft Word document on SPS Googledrive.



See below for Part 2 about how to download Google files onto Microsoft. ☺

How to Work with SPS Microsoft, and Google Drive & Google Classroom Interchangeably

Part Two: How to Download SPS Google Drive files onto Microsoft

How to Download SPS Google Drive files onto Microsoft

1. Login to SPS Google Drive
2. Navigate to the Google Drive file you'd like to open on Microsoft

The screenshot shows a Microsoft Word document titled "Veterans Day Text sample 10-4-18" with "SPS Google Drive" in the title bar. The document content is as follows:

Veterans Day Text

<https://go.scholastic.com/B/article/atb/999/atb999h6003.html?highlightTerm=veterans%20AND%20day>

"Veterans Day." Scholastic GO!,
go.scholastic.com/content/schgo/B/article/atb/999/atb999h6003.html. Accessed 4 Oct. 2018.

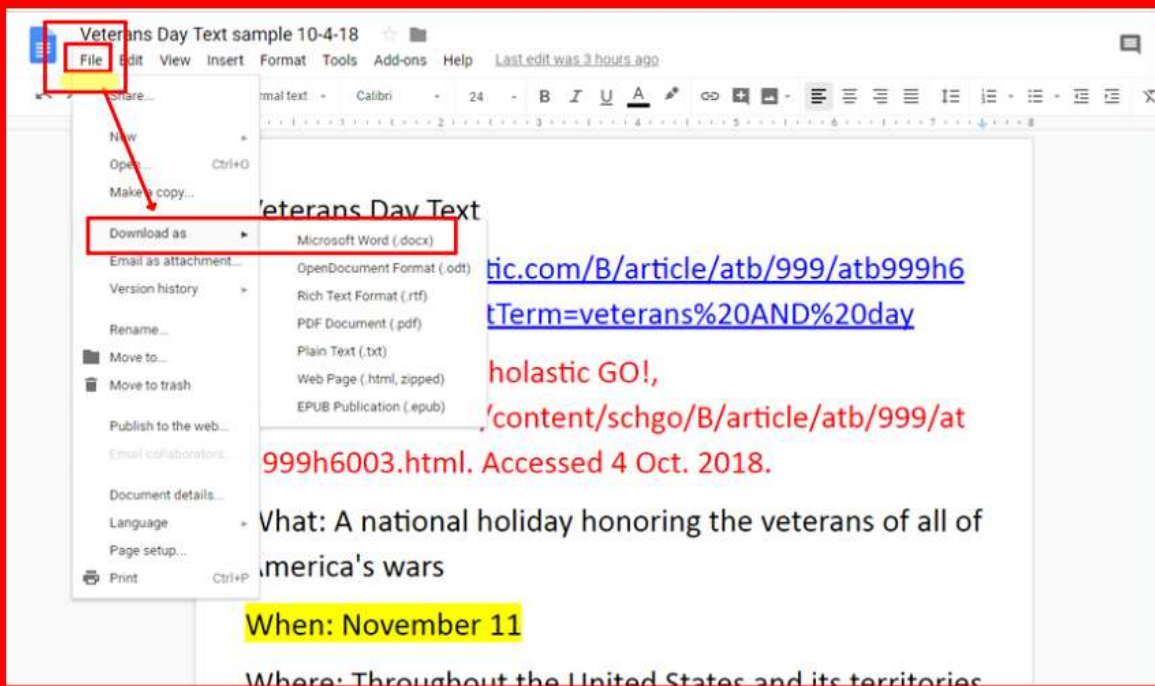
What: A national holiday honoring the veterans of all of America's wars

When: November 11

Where: Throughout the United States and its territories

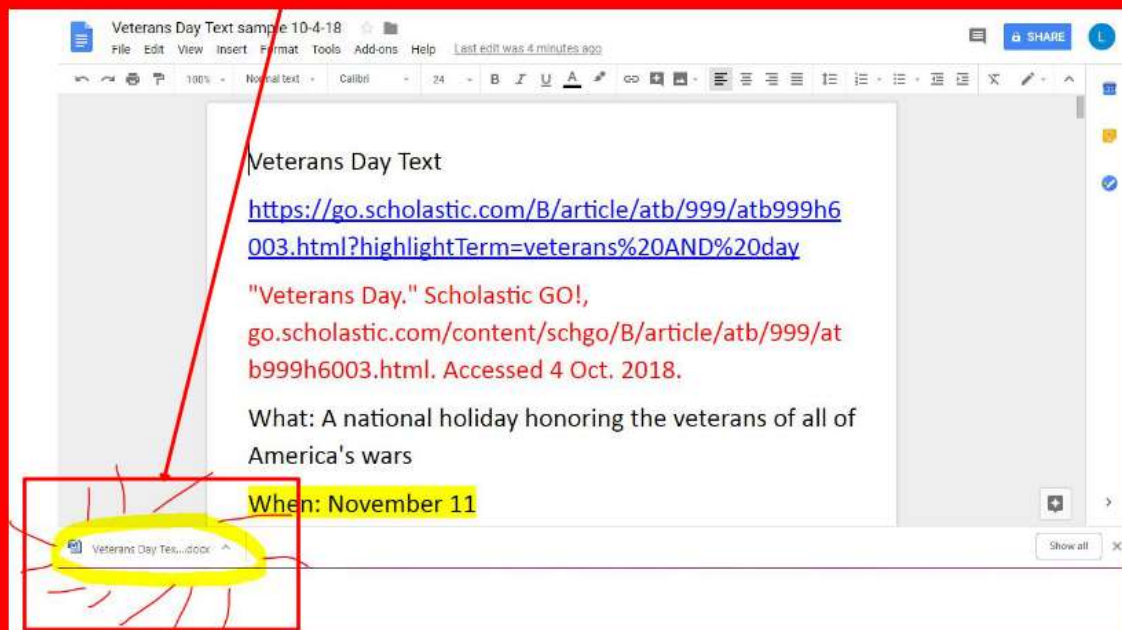
How to Download SPS GoogleDrive files onto Microsoft

3. File>Download as Microsoft Word



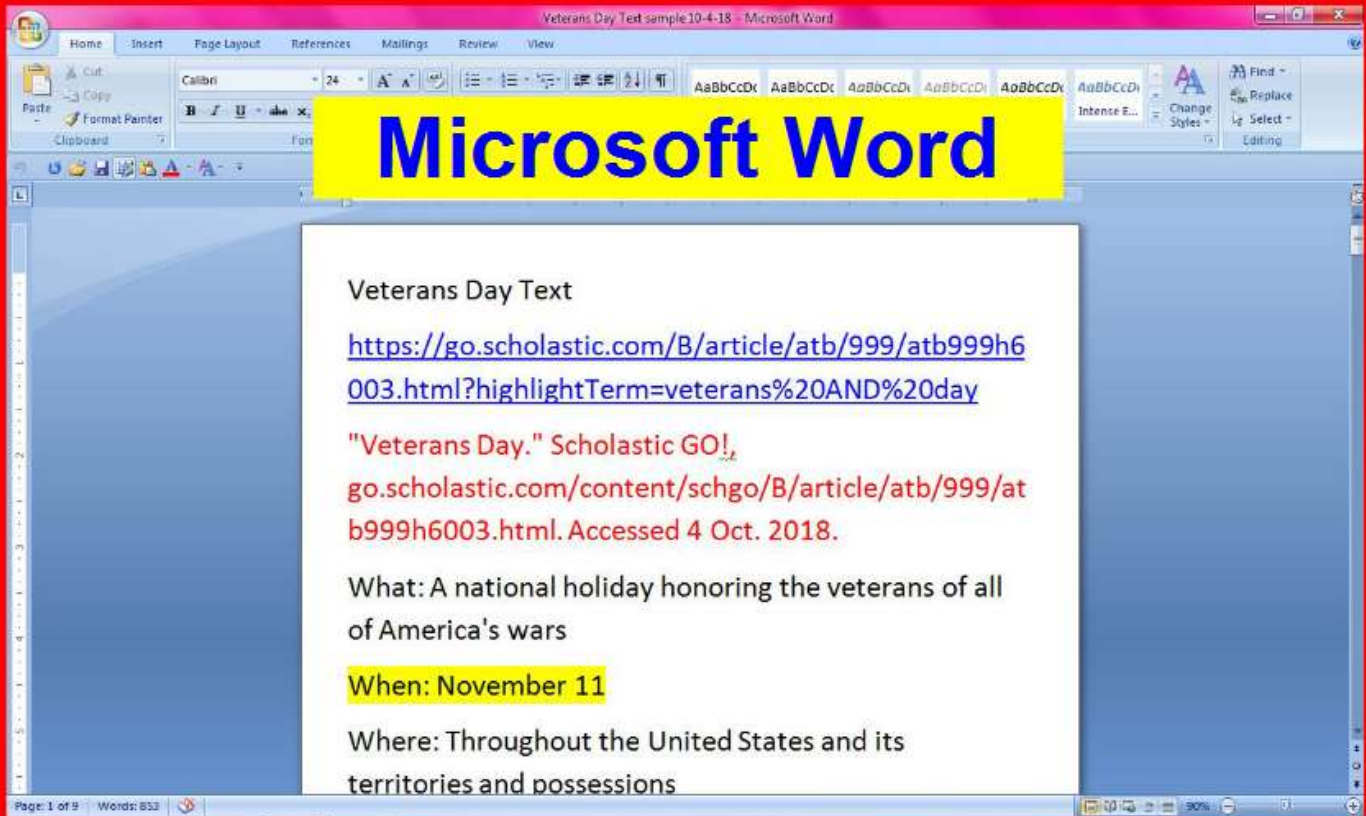
How to Download SPS GoogleDrive files onto Microsoft

4. Click on the file in the bottom-left corner of the screen to open it.



How to Download SPS Googledrive files onto Microsoft

5. Click on **Enable Editing** and then **SAVE** your downloaded file to your login number. (File>Save As>Computer>Number>**SAVE**)



See below for information about using Microsoft files on Google Classroom. 😊

How to Work with SPS Microsoft, and Googledrive & Google Classroom Interchangeably

Part Three: How to Upload SPS Googledrive/Word files onto Google Classroom

Part Three: How to Upload SPS Googledrive/Word files onto Google Classroom

1. Login to SPS Googleclassroom and join a Googleclassroom lesson.

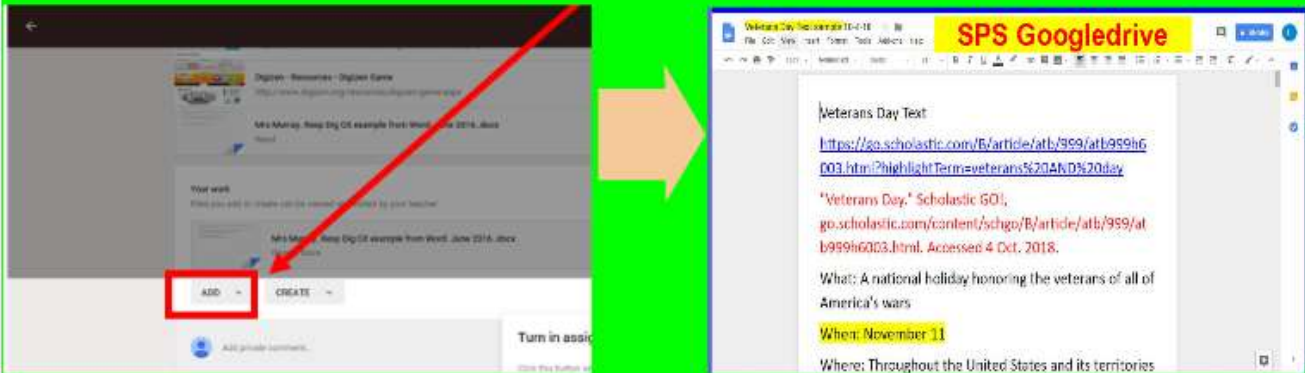
A student can join the class by clicking on  > Join class > enter class code > Join. Example: CLASS CODE pmzjcis



The screenshot shows the Google Classroom interface. In the top right corner, there is a plus icon (+) which is highlighted with a red box labeled '1'. Below it, a dropdown menu is open, showing 'Join class' and 'Create class'. The 'Join class' option is highlighted with a red box labeled '2'. In the center of the screen, a dialog box is open with the text 'Enter class code to join.' and a text input field containing 'pmzjcis'. Below the input field are 'CANCEL' and 'JOIN' buttons. The 'JOIN' button is highlighted with a red box labeled '3'.

Part Three: How to Upload SPS Googledrive/Word files onto Google Classroom

2. Click on **Add** on SPS Googleclassroom.
3. Navigate to My Documents on SPS Google Drive to locate and open your saved Microsoft work.



Good Job!!!



Questions, concerns or comments? Please let me know.

Lynn Murray lmurray@stamfordct.gov